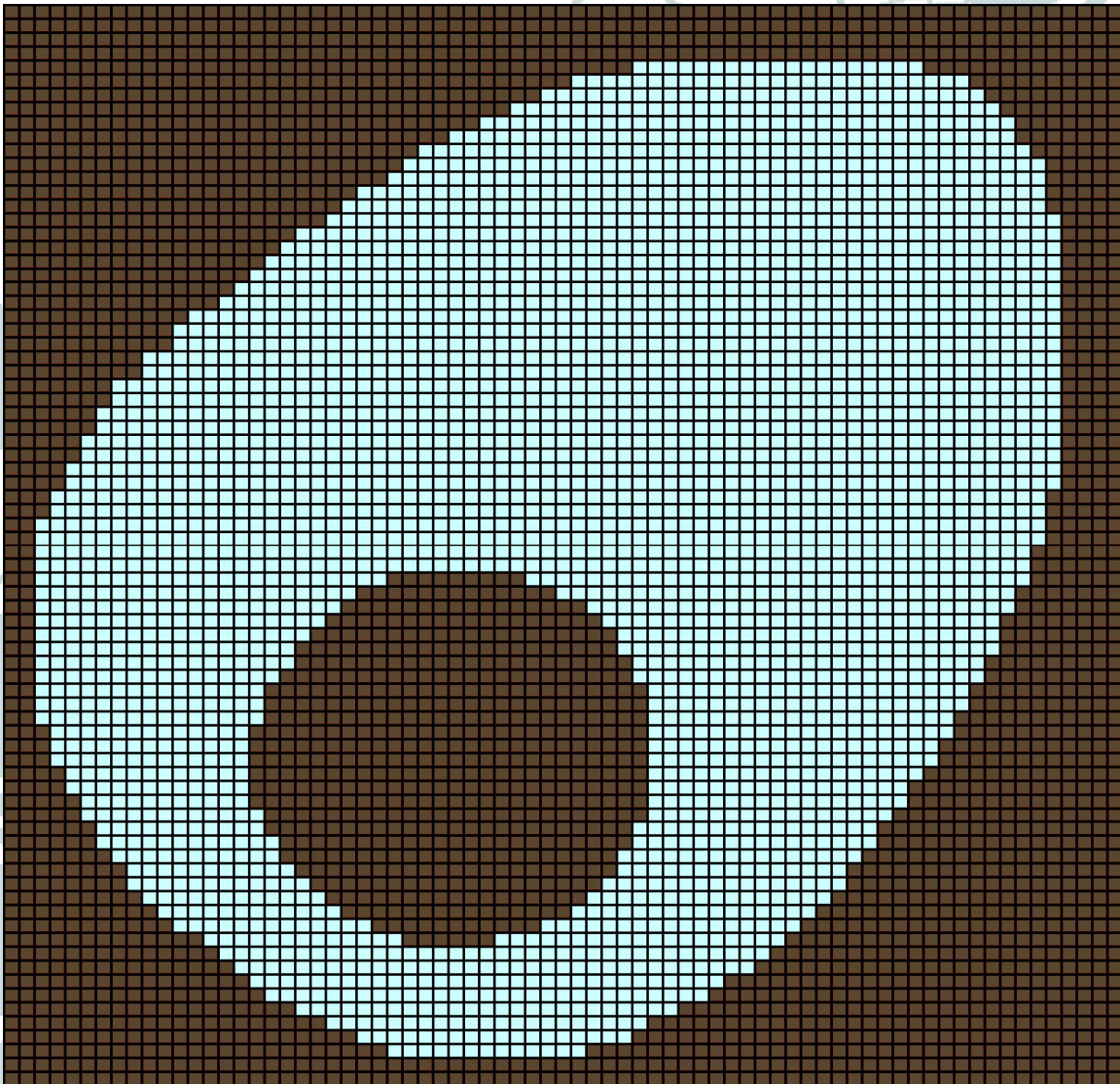


P↑DODDLE
DES↓IGNS



BLUE EGG NEEDLEPO↑NT↓ PATT↓ERN





I worked this pattern on 10 ct. canvas and the final stitched piece was about 7.5" square.

It was stitched in Paternayan wools, number 459 (brown) and 522 (blue), but feel free to get creative and use whatever colors you like.

© 2008 Carissa Christner.

Please don't use this pattern for commercial gain, but make as many as you like for personal use!

